

CERTIFIED LAND CORNER RECORDATION

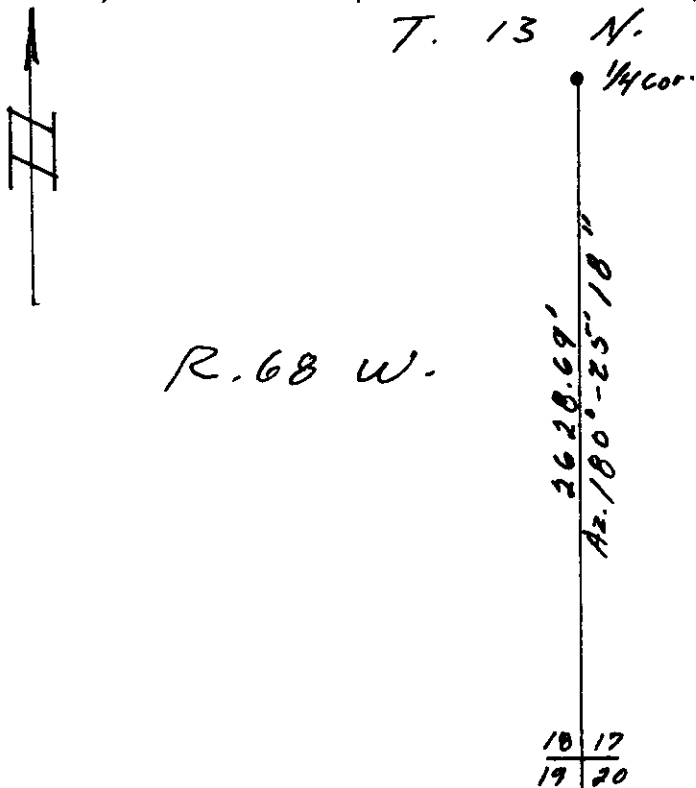
DESCRIPTION OF CORNER EVIDENCE FOUND, AND ORIGINAL RECORD (If known)

*1/4 corner for sections 17 & 18, T. 13 N., R. 68 W.
Found loose stone with "1/4"*

DESCRIPTION OF MONUMENT AND ACCESSORIES ESTABLISHED
TO PERPETUATE THE ORIGINAL LOCATION OF THIS CORNER:

Set 8" spike @ location of stone - left stone as memorial

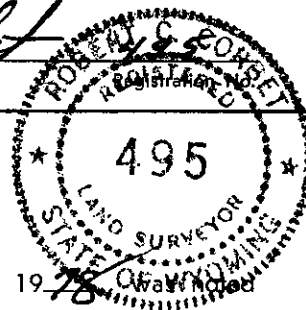
SKETCH, WITH COURSE AND DISTANCE TO ADJACENT CORNER IF DETERMINED IN THIS SURVEY.
(May Sketch or Paste Reproduction on Reverse Side.)



Azimuth determined by solar observation

I, Robert C. Corbet certify that I have carefully performed or reviewed the work done on the diagrammed corner as reported on this recordation form and approve the same.

Robert C. Corbet
Signature of Surveyor



STATE OF WYOMING,
Office of Clerk and Recorder,
County of Saramie

496612

This "corner record" was filed for record on the 22 day of August, 1978, on the cross-index plat and is assigned page No. _____, in book No. _____.

Janet C. Whithead
County Official

Cross Index No. <u>1-5</u>	T. <u>13</u>	R. <u>68</u>	Mer.
_____	T. _____	R. _____	Mer.
_____	T. _____	R. _____	Mer.
_____	T. _____	R. _____	Mer.
_____	T. _____	R. _____	Mer.
_____	T. _____	R. _____	Mer.

496612

Photographed.....
Indexed *RP*.....
Posted *✓*.....
Assessor *Y*.....